



Passion Through Personalized Learning for All

...

Paula Apostolou

Sara Card

Jana Smith

Maumee Valley Country Day School

Think of a time when you had a
meaningful learning experience.

What is ONE word you would use to
describe it that made it
meaningful?

Rewarding





RELEVANT



Gentle Feedback



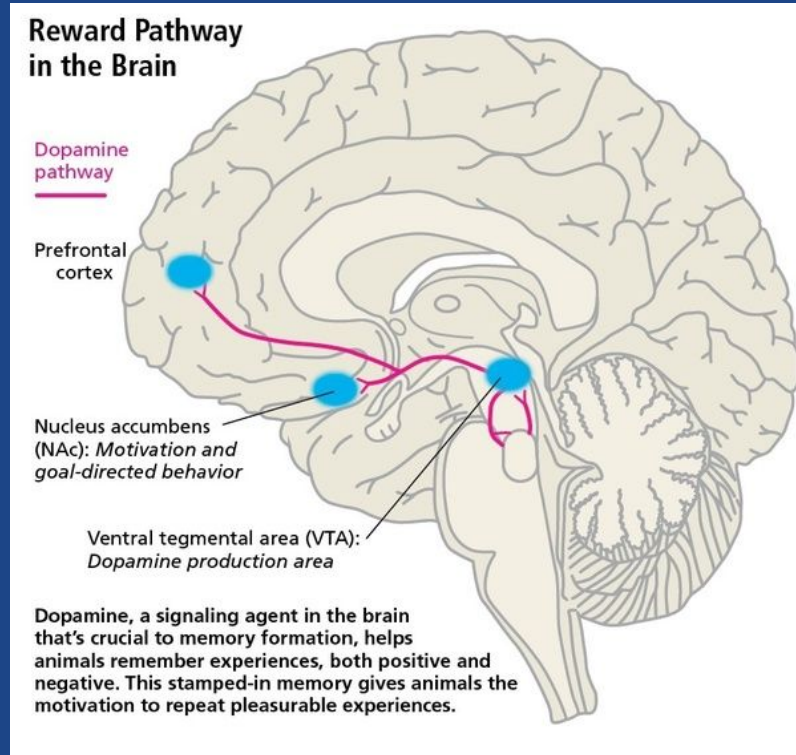
Agenda & Outcomes

- What makes learning meaningful? What makes it “stick?”
- Maumee Valley Country Day School's Programs Built Around Passion
- Break-Out Sessions
- Reflect & Connect

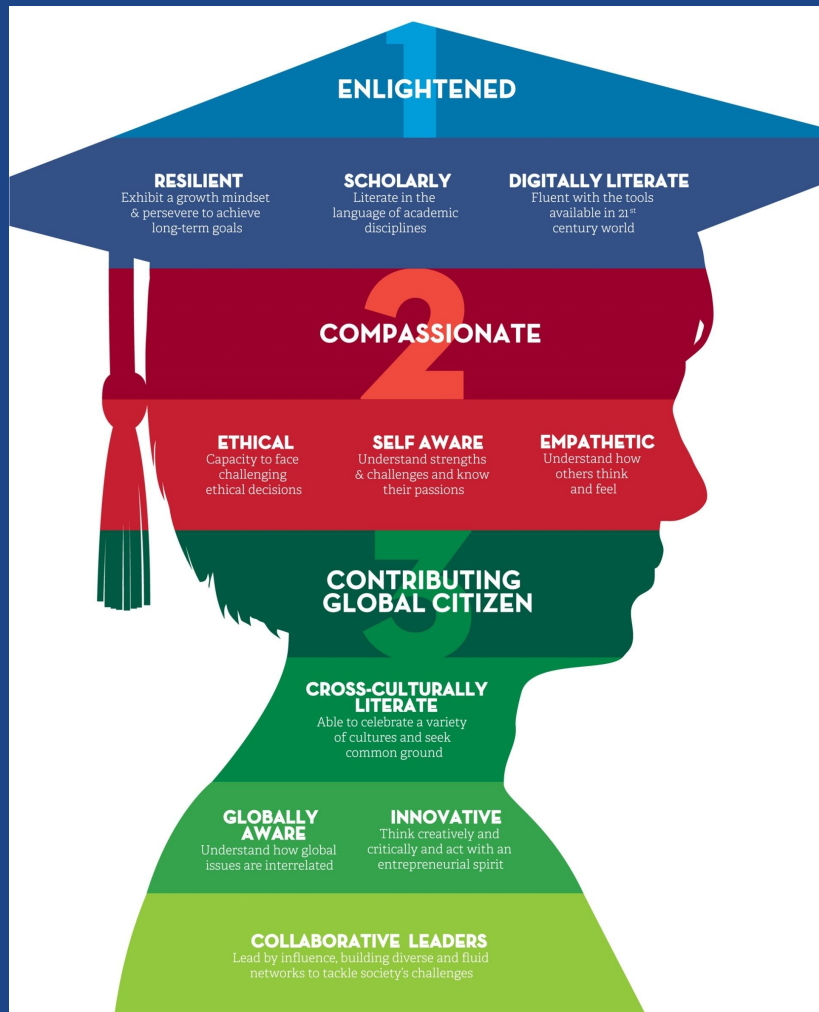
Participants will leave this session with:

- Ideas, strategies, and resources to bring passions to life at their own schools

What makes learning meaningful? What makes it “stick?”



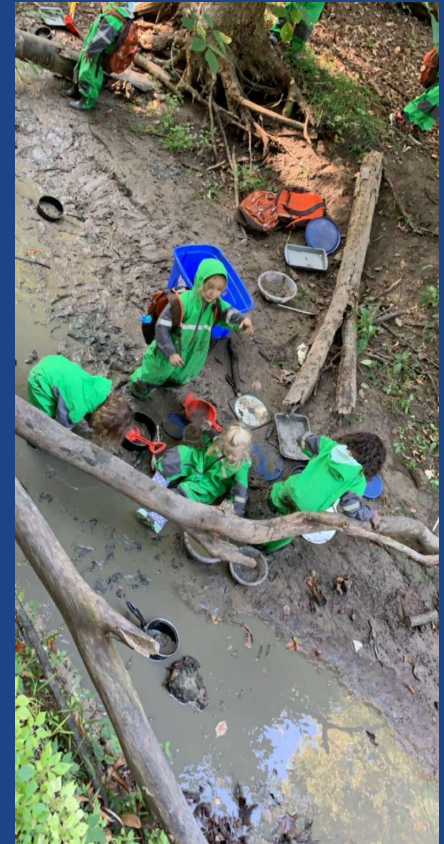
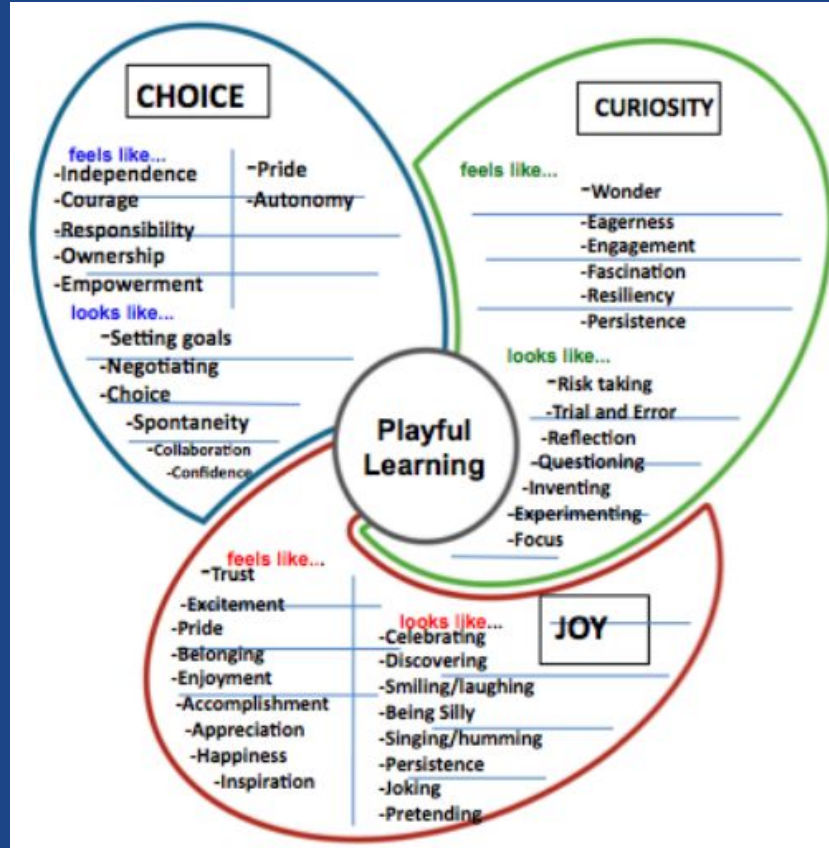
Di Domenico, S. I., & Ryan, R. M. (2017). The Emerging Neuroscience of Intrinsic Motivation: A New Frontier in Self-Determination Research. *Frontiers in human neuroscience*, 11, 145. doi:10.3389/fnhum.2017.00145



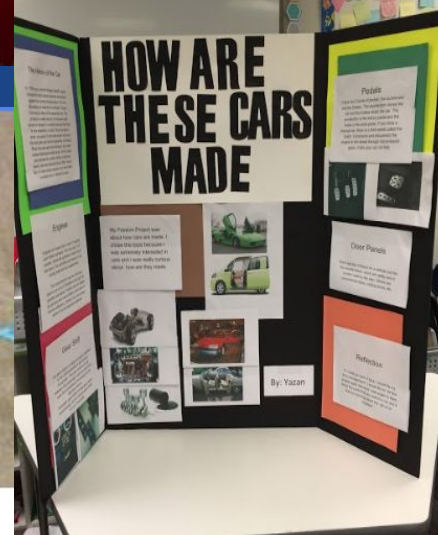
Maumee Valley Country Day School
Our mission is to enable students to become enlightened, compassionate and contributing citizens of our global community, while preparing graduates for their best opportunities in higher education.



Early Learning Center



Lower School: Passion Projects



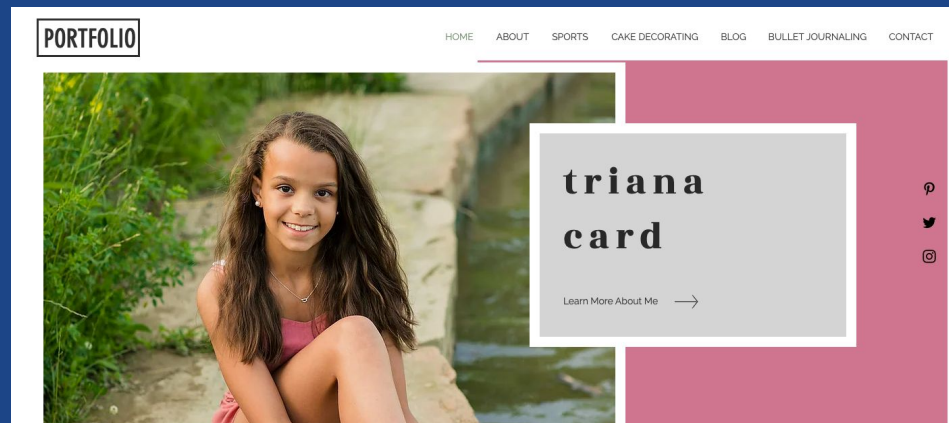
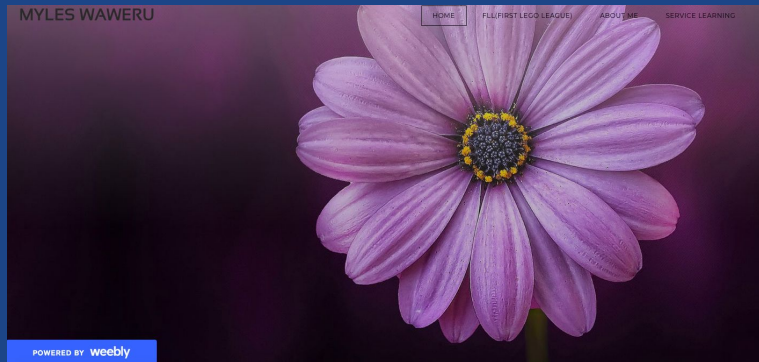
My Work

Middle School: X-Block & Independent Studies

	Day 1	Day 2	Day 3	Day 4	Day 5
8:10 - 8:40	Advisee	Advisee	Advisee	Advisee	8:10 - 8:35 MS Mtg
8:40 - 9:40	A	E	D	C	8:35 - 9:30 B
9:40 - 10:00	BREAK				9:30 - 10:25 C
10:00 - 11:00	B	A	E	D	10:25 - 10:45 Break
11:00 - 11:45	FA 8 / PE 7				10:45 - 11:40 D
	TRAVEL/TRANSITION TIME				11:40 - 12:35 E
11:50 - 12:35	PE 8 / FA 7				
12:35 - 1:15	Lunch				
1:15 - 2:05	C	B	A	E	X-BLOCK
2:05 - 2:55	D	C	B	A	
2:55 - 3:00	ADVISEE - CHECK OUT				



Middle School Digital Portfolios



Upper School: 5-Term Schedule

Fall Intensive (3 weeks)	Fall Rotation (13 weeks)	Winter Intensive (3 weeks)	Spring Rotation (13 weeks)	Spring Intensive (3 weeks)
	A		A	
	B		B	
	C		C	
	D		D	
	E		E	

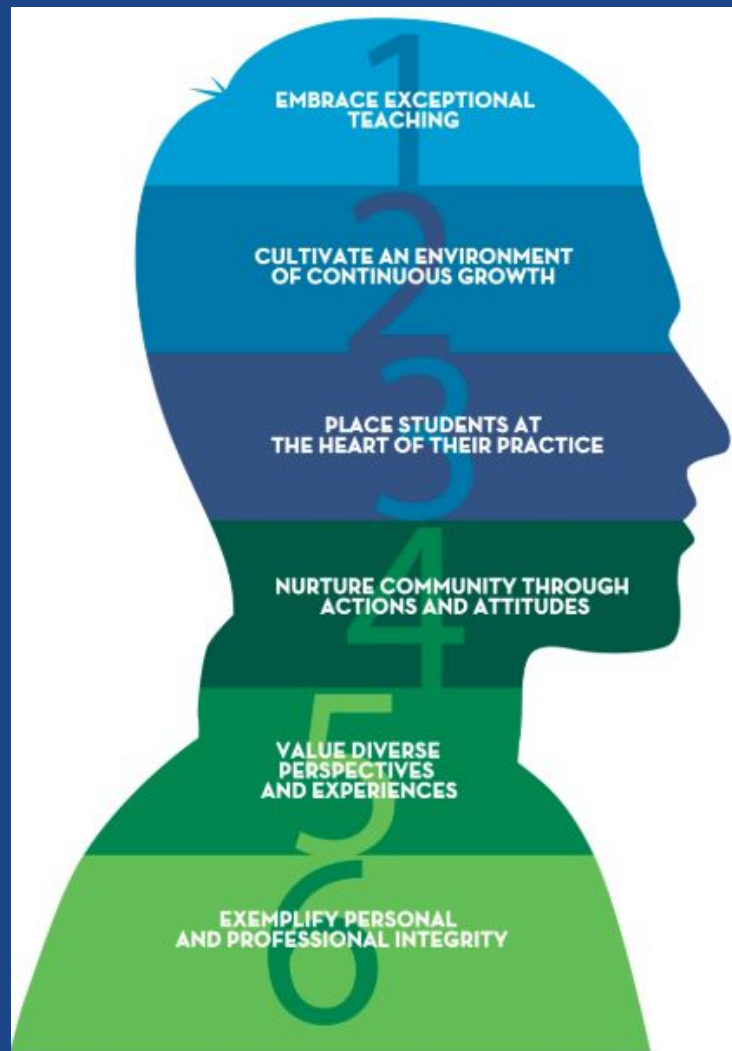
Upper School: 5-Term Schedule--INTENSIVES

TEACHER	FALL	c	WINTER	c	SPRING	c
HUMANITIES	INTERDISCIPLINARY RESEARCH METHODS -9TH	S	THE SUSTAINABLE CITIES-9TH	SS	PLANNING	
SOCIAL STUDIES	PLANNING		THE SUSTAINABLE CITIES-9TH	SS	GLP TRIP	O
MATH	INTERDISCIPLINARY RESEARCH METHODS -9TH	S	PLANNING		COOKING AND BOOKING: ITALY TRIP	E/O
MATH	GREAT A-HA MOMENTS IN MATH	M	PLANNING		INTRO TO PROBABILITY	M
MATH	FORMAL LOGIC	M	THE SUSTAINABLE CITIES-9TH	M		
WORLD LANGUAGE	GUATEMALA MEDICAL HEALTH	WL/S	SPANISH DEBATE	WL		
WORLD LANGUAGE	PLANNING		FIND YOUR ZEN	PE		
SCIENCE	PLANNING		PHYSICS II: INTRO TO ENGINEERING	S		
SCIENCE	INTERDISCIPLINARY RESEARCH METHODS -9TH	S	PLANNING			
SCIENCE	GUATEMALA MEDICAL HEALTH	WL/S	BIOIII: BIOTECHNOLOGY	S		
MATH	STEEL DRUM	FA	BUSINESS MATH	M		
ENGLISH	MYSTERY STORY	E	LIT OR MISS	E		
SOCIAL STUDIES/SCIENCE	MEDIEVAL HISTORY	SS	PLANNING			
HUMANITIES	FORMAL LOGIC	M	APPLIED ETHICS	SS/E		
ENGLISH/TECH	MULTI-MEDIA	FA	PLANNING			
ENGLISH	PLANNING		JOURNALISM	E		
VISUAL ARTS	PLANNING		HISTORY OF PAINTING	FA		
DRAMA/THEATER	PLANNING		BROADWAY	FA		
PE/HEALTH	HEALTH	O	FIND YOUR ZEN (50PE)	O		
MUSIC	STEEL DRUM	FA	BROADWAY	FA		
TECH	PLANNING		ROBOT VS ROBOT (10)	O		
WORLD LANGUAGE	PLANNING		MIDDLE SCHOOL CHINESE			
ENGLISH	INTERDISCIPLINARY RESEARCH METHODS -9TH		THE SUSTAINABLE CITIES-9TH	SS		
STAFF	PLANNING		PLANNING			
STAFF	PLANNING		PLANNING			



Programming for Faculty & Staff

- Professional Development Funding
 - Teacher PD Accounts
 - Summer Grant Work
 - Stranahan Humanities Chair
 - Late Starts
 - In-Services
 - On-Site Summer PD
- Dream Odyssey
- Growth & Renewal Program



Break-Out Sessions

What would you like to learn more about?

- Early Learning Center - Forest School / Play-Based Learning Pedagogy
- Lower School - Passion Projects
- Middle School - X-Block & Independent Studies
- Upper School - 5-Term Schedule
- Faculty & Staff Programming

Directions:

1. Introduce yourself to your group members.
2. Explore the resources: <https://tinyurl.com/y4e58dfq>
3. Create a list of do-nows, questions for presenters, questions for school members

Reflect and Connect

Reflect

- What are your major takeaways from today?

Connect

- With whom did you connect in this session (did you remember to get their contact info)?
- With whom will you connect about your takeaways when you return to your campus?